

# Xtreme Duty - Pneumatic Pump Drive for Drums & IBCs

## Model DM-55PMDL-XP Pump Drive

Pump tubes supplied separately (PP, PVDF, AL, SS, Hastelloy)

Model No. DM-55SPTL/SS-MSL39R, Stainless Steel, 39" Pump Tube, shown here



## Operating Information, Parts Views, Codes

### Pneumatic Pump Drive

This explosion proof pneumatic drum or IBC-tank pump drive uses a lockable On-Off trigger to control transfer flow rate. The pump has an earth-ground connection for hazardous duty operation when used with metal pump tube and a grounding kit P# DM-166GWK. The pump drive is interchangeable with liquid-dedicated pump tubes to prevent cross-contamination, and station-to-station ease of usage.

### Applications & Examples of Liquids Pumped

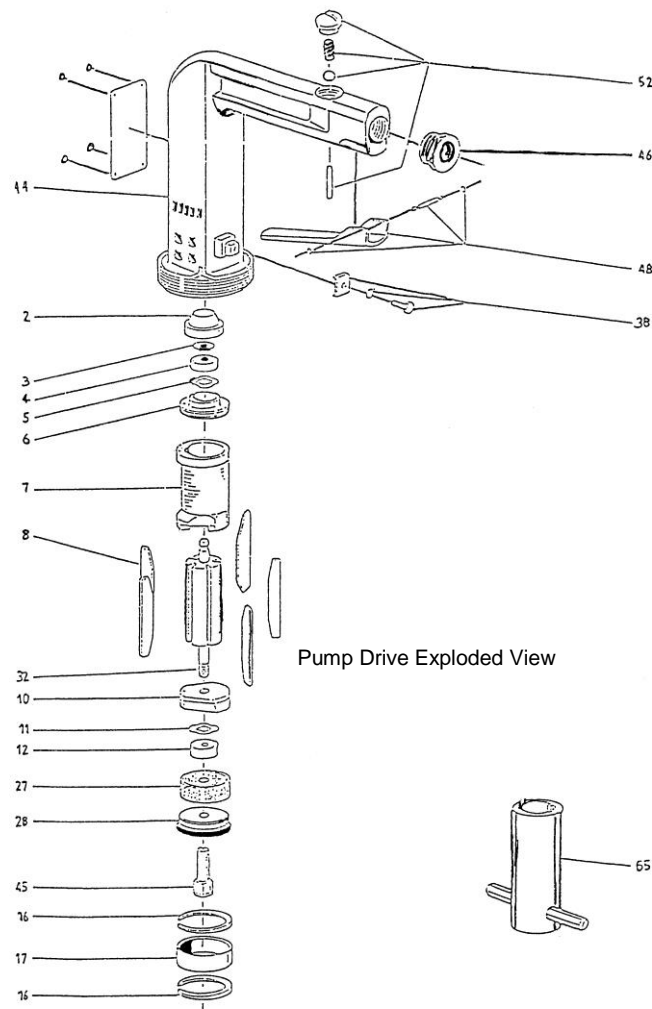
A light, easily handled, high performance pump for transferring thin-bodied to viscous, aggressive liquids (and flammable liquids with metal pump tubes), including chemicals, concentrates, corrosives and many liquid compounds up to 1600 Cps. Or higher, depending on tube choice. A "Combo-Mixer-Pump" also available.

### Pump Tubes - Supplied Separately

Many pump tubes are available. Below is the P# **DM-55DMP/LPP39** stainless steel, seal-less pump tube, in 27", 39" or 47" lengths. The tube is used with P# **DM-55BA/SS** safety drum bung adapter for secure mounting. **WARNING!** Plastic tubes should never be used in flammable operations. Always check chemical compatibility of pump tube before ordering.

### Operating Data (Note: transfer specifications change with different tubes)

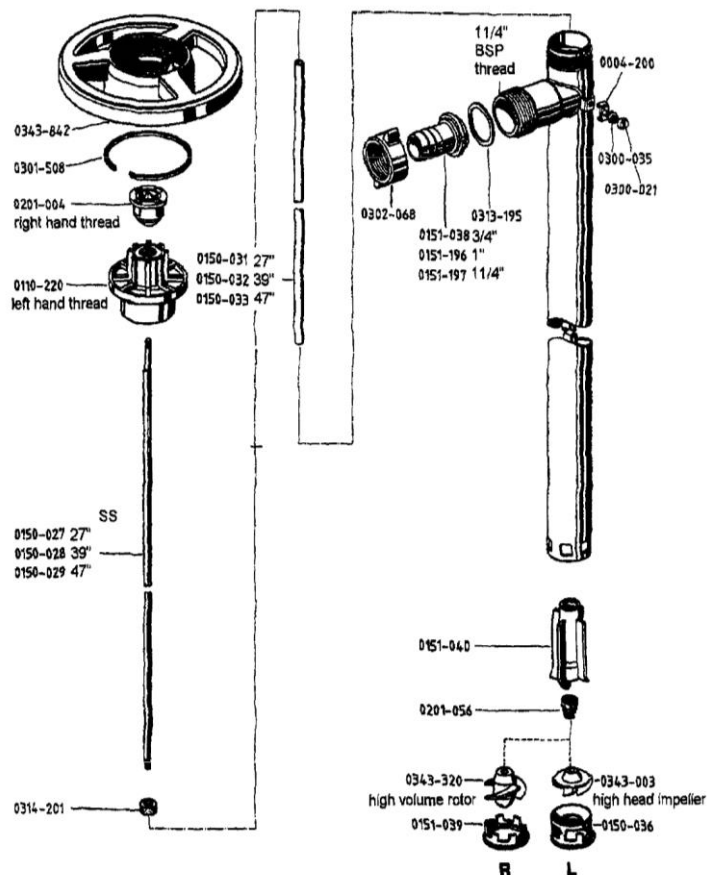
Flow rate:	up to 51 Gpm	Viscosity range:	up to 1600 Cps (centipoise)
Delivery head:	up to 36 Ft.	Immersion depth:	27" (for pails), 39" (for drums), or 47" for IBC's and tanks)
Temp. range:	up to 212° F	Weight:	Pump assembly, 7 lbs.



### **Example - Stainless Steel Pump Tube**

Model # **DM-55SPTL/SS-MSL39R**

Numerous Other Styles, Sizes, Options



**Model DM-55PMDL-XP Pump Drive**  
**SPARE PARTS LIST**

---

Pos. #	Part #	Description
2	0371-425	Protection Cap
3	0301-942*	Snap Ring
4	0321-066*	Ball Bearing
5	0301-695*	Bearing Washer
6	0204-216*	Bearing Plate
7	0371-428	Stator
8	0343-169*	Vane
10	0204-217	Bearing Washer
11	0301-694*	Ball Bearing Washer
12	0321-926*	Ball Bearing
16	0301-435	Snap Ring (2)
17	0343-162	Sleeve
27	0372-048	Sound Absorber
28	0371-455	Threaded Cap
32	0371-451	Rotor Shaft
38	0204-039	Earth Connection
44	0204-148	Motor Housing
45	0371-454	Drive Shaft
46	0371-452	Connecting Ring
48	0204-153	Trigger
52	0204-155	Pressure Valve
65	0205-000	Key

\* Recommended Spare Parts

- For use in Hazardous Area w/ Pump Tubes in Stainless or Hastelloy C.

**Drum-Mates, Inc., Process Equipment Div.**

Tel: 609-261-1033, Email: info@drummates.com, Fax: 609-261-1034  
Lumberton, NJ 08048 - USA